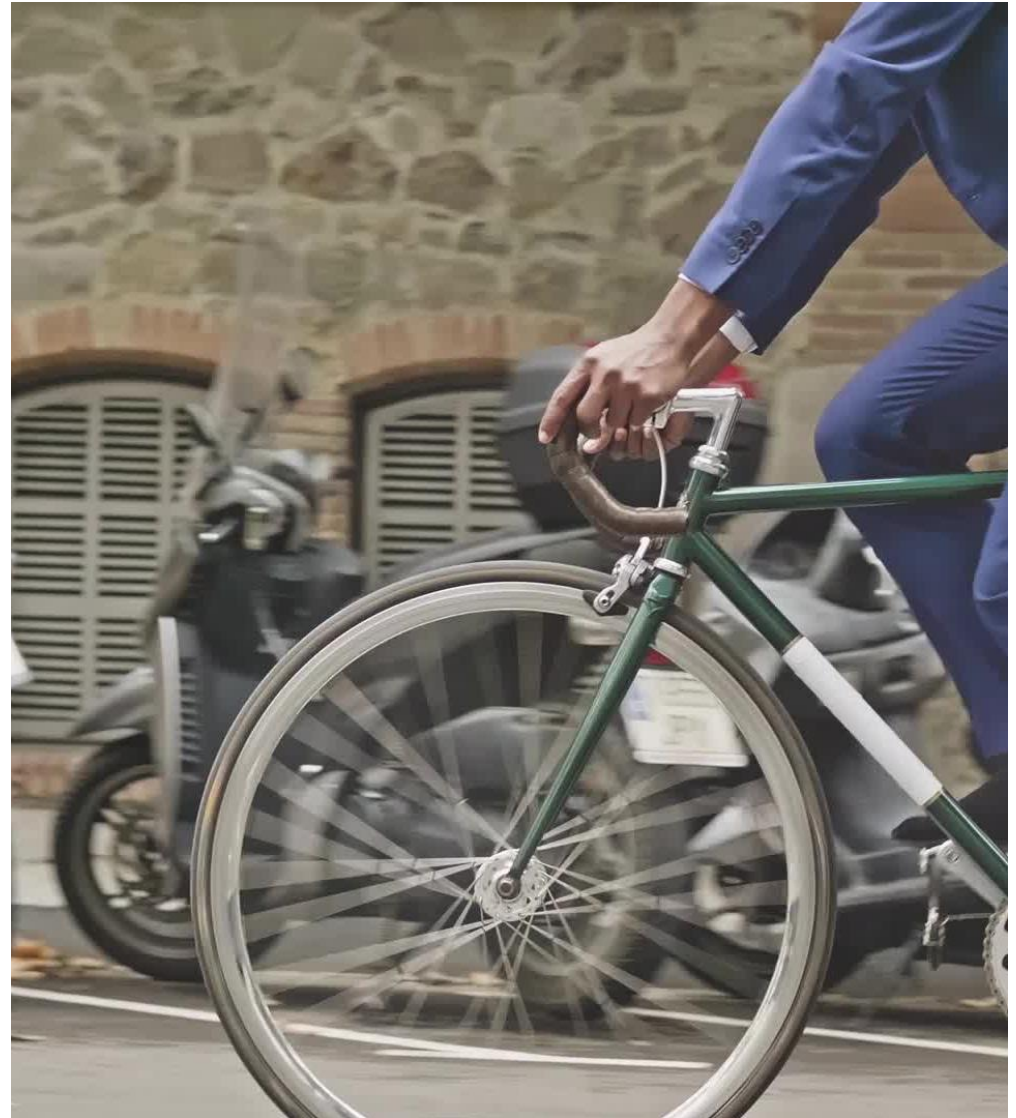
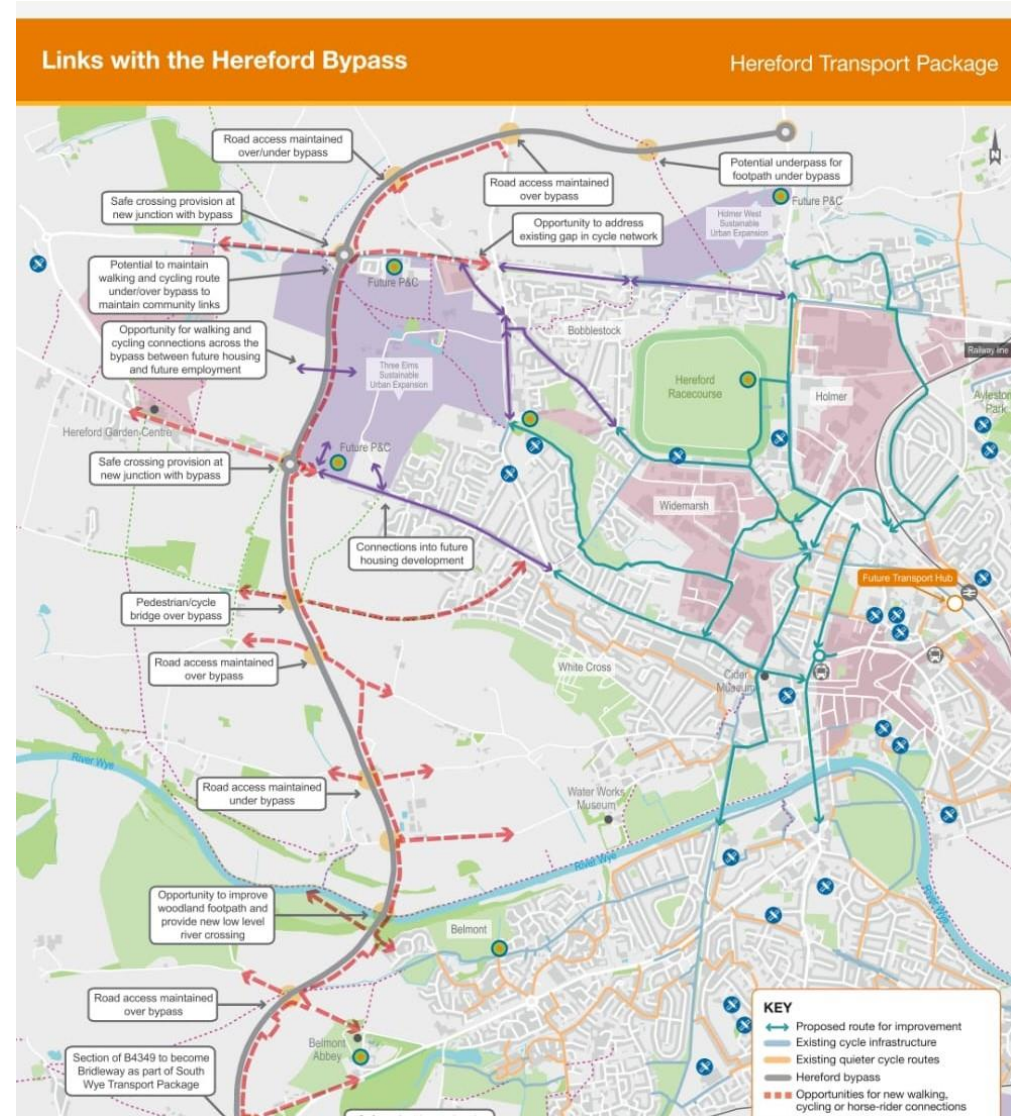

No budget for safe cycle networks (HERE4)

- **Policy HERE4: Supporting movement in and around Hereford aims to make** improvements to public realm and green infrastructure corridors that act as pedestrian and cycle routes.
- Safe cycling network design should be 1st priority, not roads
- Park and ride from cycle banks
- For students and commuters



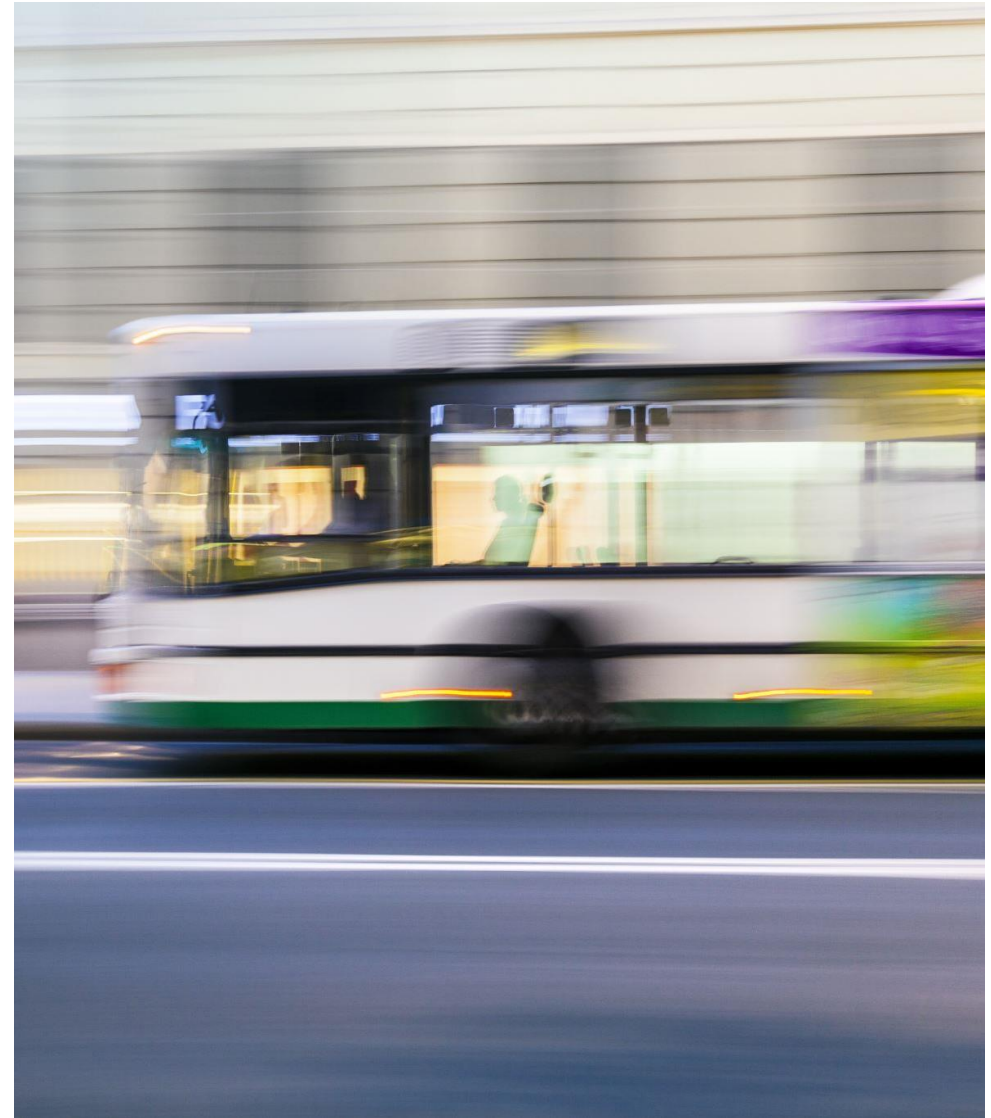
The previous road proposal included cycle lanes

- **Policy HERE4: Supporting movement in and around Hereford**
- Improvements to public realm and green infrastructure corridors that act as pedestrian and cycle routes should be included in the road design.
- The previous road design incorporated safe cycling(and walking measures.
- The proposed route excludes all past safe cycling and walking designs



No budget for school buses (HERE4)

- **Policy HERE4: Supporting movement in and around Hereford**
 - School buses
 - Bus lanes
 - The electric bus loop
- **A western corridor for establishing strategic road infrastructure, will enhance car-dependent growth of the city.**



No budget for better urban rail access (HERE4)

- The plans lack ambition for rail
- No trams are considered
- No new stations are budgeted

- Why not? All would reduce traffic?
 - Rotherwas
 - Morton on Lugg
 - Pontrilas



Rail transport reduces car dependency

Modern towns & cities use mass transit to reduce car usage.



Tram lines are installed in small and mid-sized towns in Europe.



Hereford already has rail access North and South of the City.



Rail potential for haulage and commuters ignored.



Trams could reduce inner city traffic on key routes.

Key responses for consultation

➤ ROAD BUILDING FOR WESTERN URBAN EXPANSION

Major disruption during years of construction

Loss of farmland, woodland and hedges

Loss of rural amenity value

Loss of riverine habitat SSSI SAC

300m high level road bridge

Major road embankments and cuts 70m-100m through Breinton Gorge and Breinton Ridge

Loss of community with road to City blocked off.

Community split between hamlets.

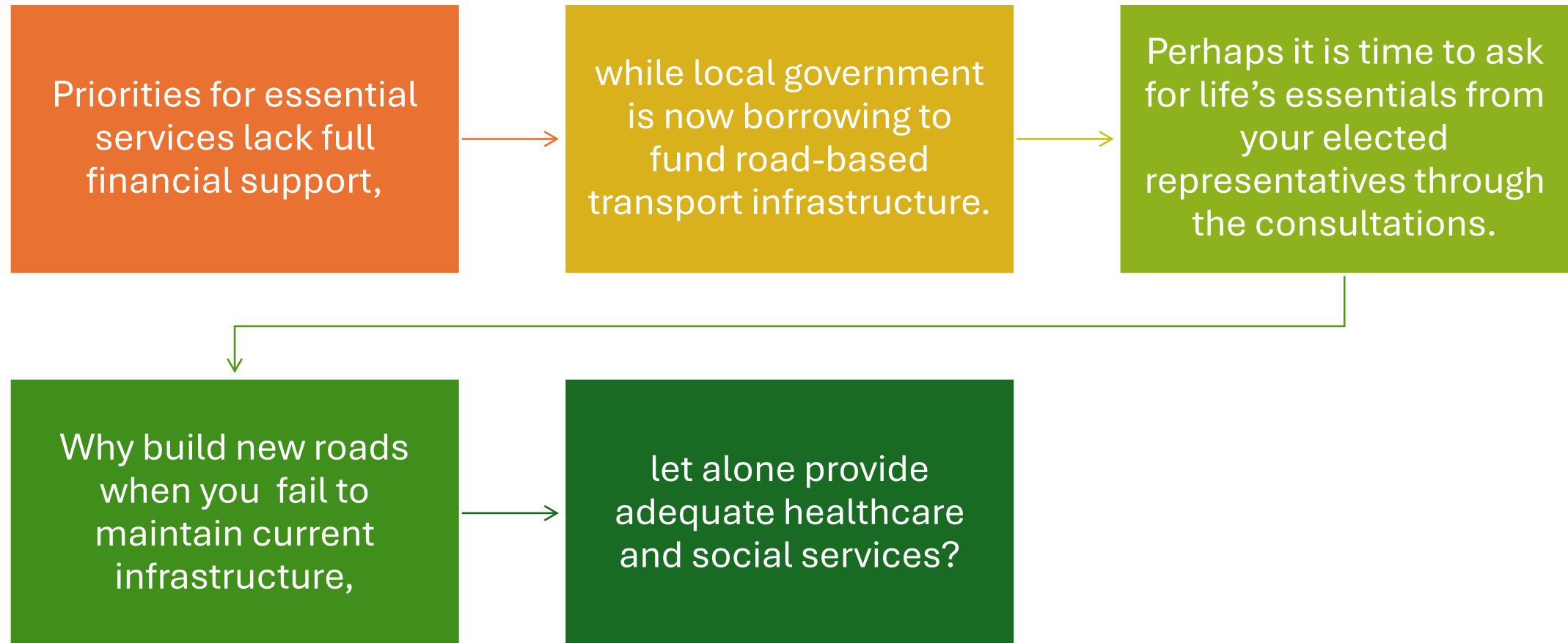
Loss of direct access to City.

Noise from traffic and loss of wildlife.

Forever chemicals, unchecked, regional traffic.

Pollution into river Wye, upstream of City water supply off-take

Debt funding road designs vs essential services



What is missing from Local Transport Plans?

Priorities for integrated active travel infrastructure.

A plan and budget to reduce car use for schools.

A plan and a budget for safe cycle networks.

A strategy to use fixed rail at business parks.

Cheap bus services to reduce car dependency.

Road building is proposed first, instead of last resort .

What is missing from the New Road Strategy for Hereford?

The carbon budget for road building is missing.

The capital budget is not credible.

Sustainable transport excluded from the infrastructure.

The business case not made but misrepresented as a bypass.

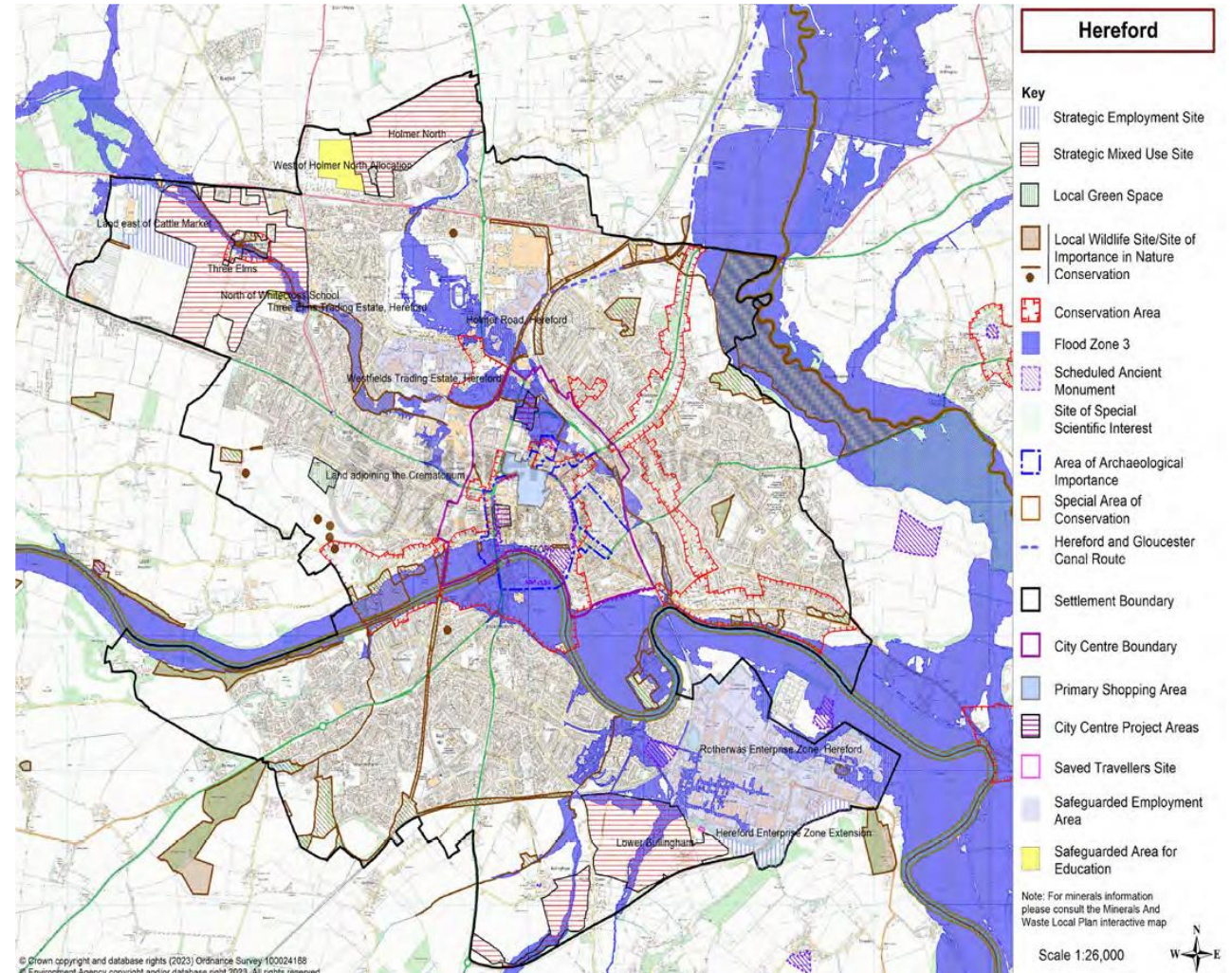
No significant relief from traffic congestion.

The environmental impact analysis is totally lacking.

FLOODPLAIN FOLLY

The Church of England expressed in General Synod February 2020 that the church is to become Carbon net Zero by 2030. The Church Commissioners are the landowners of Three Elms.

No carbon intensive developments should proceed that threaten the city with flooding and the main employers with contaminated water supplies.



- Map source: **Draft Local Plan (Regulation 18) Place Shaping Policies**

National Planning Policy

A Carbon Intensive Development

- NPPF protects
- Nature's biodiversity
- Rural Communities
- Heritage Cider Orchards
- The River Wye SSSI, SAC
- Health and wellbeing of parishioners

- Loss of City Amenity, Breinton Springs
- Impact from construction noise
- Impact from carbon emissions
- Impact water pollution in springs and river
- Heritage landscapes, Humpry Repton, Belmont
- Artist Brian Hatton 1887-1916 landscape art

Help to shape the New Core Strategy

Away from car dependent transport

Increased traffic

Increased pollution

No change to public transport

No change to essential services

Loss of heritage landscapes

Loss of rural life in hamlets

Loss of bus services

Loss of sustainable transport routes

- We will support our community
- Read our Parish Council responses
- Use the consultations
- Research better designs and developments
- Share your thoughts
- Join a pressure group
- Stop HERE6 to stop the road
- Write to your councillor
- Write to your MP